



## Non-Electric Twin Cylinder Water Softener



Model: Lydia Noonan

The Most Compact and Efficient Water Softener Ever Designed

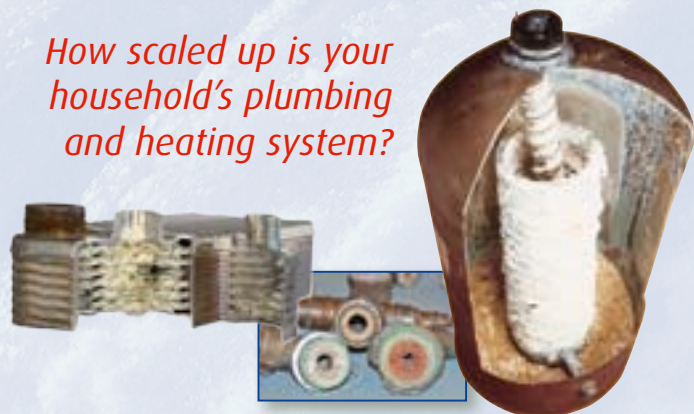


# Hard Water V Soft Water

Water quality can vary considerably and just because the water in Ireland is aggressively hard, you really don't have to live with all the problems associated with it. Installing a water softener will ensure a scale free plumbing system and a superior quality of water throughout the entire home.

*It's never too late as softened water is also a natural descaler!*

*How scaled up is your household's plumbing and heating system?*



Your hot water system can be 75% more efficient with a water softener.



## You'll Spot The Difference - Instantly!

**Q.** Are you constantly cleaning the ring of scum from your wash basin?



**A.** Wouldn't you prefer a real lather with bubbles and no scum?



**Q.** Are you forever descaling your shower head...



**A.** ...When you could be enjoying the softness of your power shower.



**Q.** Are you using a full measure in the washing machine?



**A.** When you could be using a tablespoon full.



**Q.** Are you using descalers such as Viakal, Calgon and Dishwasher salt?



**A.** When you could be using 50% less.





Introducing the...



## Twin Cylinder Water Softener

**NO SERVICING! - UNIT REMAINS ENTIRELY SCALE FREE - FOREVER!**

**USES NO ELECTRICITY! - NEEDS NO RE-PROGRAMMING AFTER POWER CUTS - EVER!**

**Low Water Usage**  
Water powered positive displacement meters that accurately measure the volume of water used

**Reliability**  
Further enhanced by using the softened water produced by the softener to power the control system. It doesn't get clogged by the hard water.

Unique long lasting resin beads



The EcoElite has an effortless front load lid that makes it easy to fill with salt

**Twin Cylinders**  
Water flows through both cylinders, enabling high flow rates.

The highly efficient regeneration cycle uses less water and less salt than a conventional softener therefore lower running costs

Utilising **Simple But Brilliant** Design Technology,  
This Is The System That Is **Here To Stay!**

### SALT EFFICIENCY

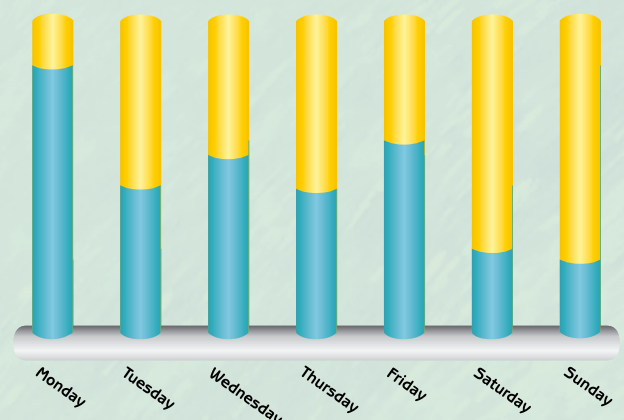
The salt is not used to soften the water, but is used to release the hardness minerals from the resin.

This process is called regeneration.

With the Eco Elite non electric operation, salt is the only consumable product. Even here the Eco Elite is more efficient and cheaper to run than other softeners. This is because the Eco Elite's unique control system uses the exact amount of salt necessary to regenerate the resin, and does not rely on a pre-programmed estimate of water usage.

**Your water consumption changes everyday.**

The Eco Elite handles these changes, using only enough salt to soften the water you use.





# The Four Most Asked Questions

**Q. So how does a water softener work?**

**A.** It works simply by directing your incoming water supply through vessels within the softener. These contain the “magic substance” - ion exchange resin beads which exchange calcium and magnesium ions (hardness) with sodium ions as the water passes through.

**Q. What is regeneration?**

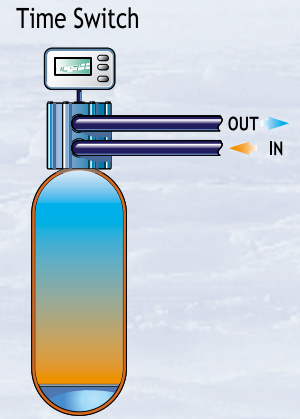
**A.** This is the automatic back washing of the resin beads using salt solution (brine) which will recharge the resin, flushing down the drain any excess sodium and all hardness. The recharged resin is then ready and able to produce softened water when required.

**Q. What makes my twin cylinder system better?**

**A.** Twin cylinders ensure there is an uninterrupted supply of softened water available at all times, even during a regeneration/backwash cycle. A single cylinder system would give hard water, or even salty water to the household if water was used during a regeneration/backwash cycle.

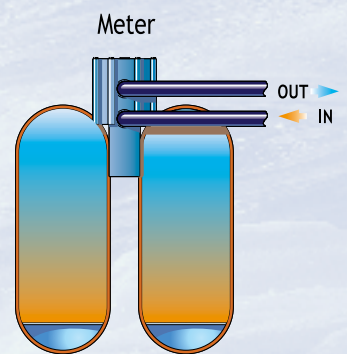
**Q. Why is a meter system better than a timeclock?**

**A.** A meter accurately measures the softened water that you use instead of “guessing” how much water you might use throughout the week. A meter will also start regeneration exactly at the right moment, without any delay. The alternative timeclock design will need regular “re-programming” to allow for your “irregular” water usage.



Single Cylinder

Single Electric Design  
1-Hour Cycle

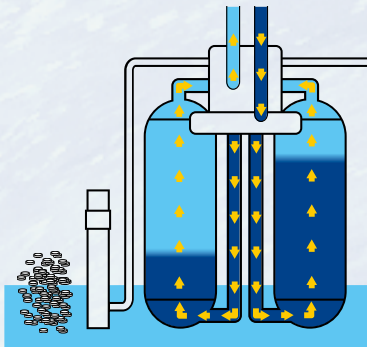


Twin Cylinder

Twin Non-Electric Design  
10-Min Cycle

## At Last.... a Twin Cylinder, Non Electric Softening Design That's **Totally Efficient**

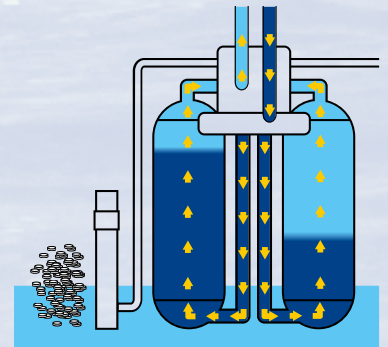
Duplex Parallel Flow, Accurate Metering and Advanced Regeneration is the Key



The concept of dual flow allows unparallelled flow rates

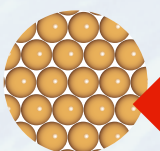


The in-built positive displacement water meter is 100% accurate and measures every single drop of water used within the household

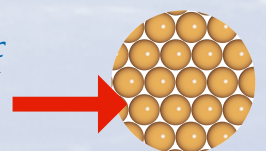


The combination of reverse flow and revolutionary vessel design give increased salt efficiency

Fully pressurised systems are fast becoming a standard fitment in new houses built in the Ireland. With its high flow capability and increased capacity, this unique compact unit supplies softened water from **one to ten people**



At the heart of this softening process are millions of superior ultra fine long lasting resin beads





# Features and Benefits

## Small & Compact

Twin cylinder non-electric water softener that easily fits under the kitchen sink.

## Twin Cylinders

For a continuous supply of softened water 24 hours a day.

## Non-Electric

No time clocks. No computers. No worries!

## Displacement Meter

Full displacement meters allow maximum and minimum flow rates of water, even measuring down to one drip.

## Brine Valve

The unique brine valve fitted on the EcoElite allows for fine-tuning and for greater salt efficiency.

## Resin

The latest technology give the finest granulometry of all.

## Regeneration

The EcoElite has the most efficient regeneration, which only uses 17 litres of water per regeneration in only 10 minutes!

## Performance

The performance of the EcoElite out performs any other twin cylinder water softener and is second to none!

## Installation

The EcoElite is designed for all modern day installations.

## Water Hardness in Ireland



## Need More?

- Up to 20 people
- Multiple power showers
- Guest houses
- Hotels



- Pubs and Restaurants



- Large houses

Your authorised dealer is:

**Aqua Safe Systems**

Ballinahinch  
Knocklong  
Co. Limerick  
Ireland

00 353 878122143

[www.aquaclear.ie](http://www.aquaclear.ie)

There's always a place for the **ecoelite** softener



KITCHEN



GARAGE



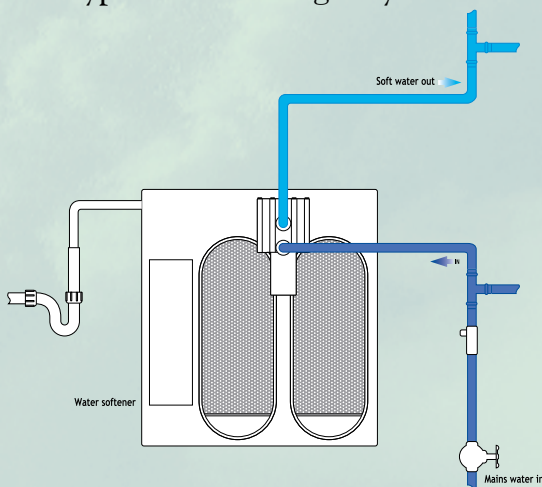
PUMP HOUSE



OR OUTSIDE

Let us help you choose the best place for your water softener

### Typical Plumbing Layout



### Installation

Professional installation by our very own skilled engineers or supplied complete with fitting kit for D.I.Y.

### Dimensions



ALL **Eco Elite** water softeners include testing kit and hoses.



### Drinking Water

You also have the option of improving your drinking water by installing a variety of different drinking water products currently available from ourselves.



### Moving house?

You may want to leave the past behind but not your water softener. Eco Elite can easily be **disconnected** and **re-installed** in your new home to keep up the same supply of beautifully soft water wherever you go.

Do you have an OLD electric softener?

*Please ask about our upgrade options.*